

Introducing the RedEye Pro

Now in a professional, rack-mountable form factor, the RedEye Pro system allows the iPhone, iPod touch, and iPad to function as controllers for a wide range of home automation applications.

Connected.

- Discrete IR output, contact closure, RS-232, and USB for sophisticated home automation
- 802.11b/g Wi-Fi and 10/100 Ethernet

Flexible.

- Divide the ports on a Pro to control multiple rooms, or
- Combine Pro units together if you need more connectivity

Sophisticated.

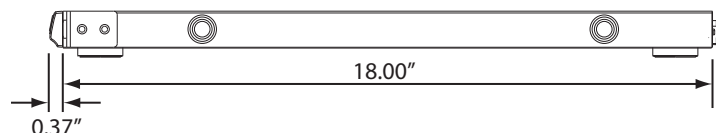
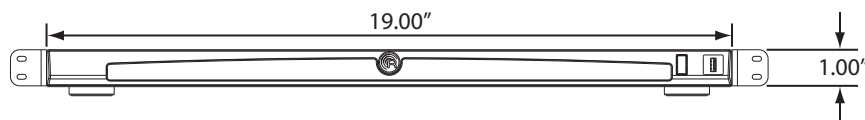
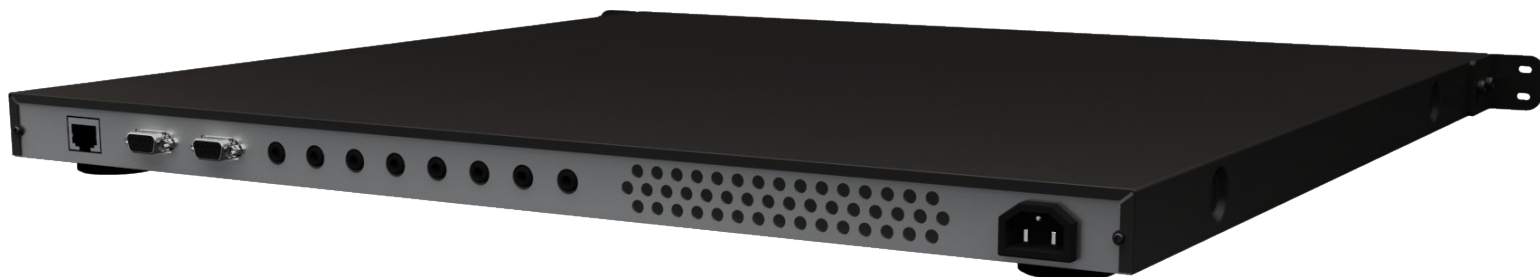
- Internal power supply, stylish design, and removable “ears” so the Pro looks great in a rack or a stack
- Advanced customization tools for installers

Available on the iPhone
App Store



Pro Features

- | | |
|-------------------------|--------------------------------------|
| • 8 IR emitter ports | • Completely custom activity layouts |
| • 2 RS-232 ports | • Support for multiple controllers |
| • 10/100 Ethernet | • Easy integration with other rooms |
| • 802.11b/g Wi-Fi | • Extensive library of device codes |
| • Internal power supply | • Whisper-quiet, fanless operation |



Technical Specifications

Connectivity

- 8 dual-purpose, 3.5mm infrared emitter/contact closure sensor ports (IR emitter output @ 5V; contact closure sensor up to 24V)
- 4 contact closure relays (each rated up to 500mA @ 24V with de-bounce)
- 2 RS-232 ports (DB9)
- 10/100 Ethernet (RJ45)
- USB-A port (front panel)
- USB-B port + 2 USB-A (rear panel)
- 802.11b/g Wi-Fi

Power

- 100-240V, 50-60Hz internal power supply

Requirements

- iPhone, iPhone 3G, iPhone 3GS, or iPod touch with firmware update 2.2.1 or later
- RedEye software application (available as a free download via the App Store or iTunes)

Recommended

- Wi-Fi (802.11b/g) network with Internet connection

Supports

- WEP, WPA, WPA2 security protocols

Ordering Information

Phone: 617-299-2000 (option 2)
 Fax: 617-812-7996
 Email: sales@thinkflood.com