



INSTRUCTIONS FOR USE  
Pro-Ject Phono Box USB V

Dear music lover,

thank you for purchasing a PRO-JECT AUDIO phono amplifier.

In order to achieve maximum performance and reliability you should study these instructions for use carefully.



*Warning of a hazard for the user, the unit or possible misuse.*

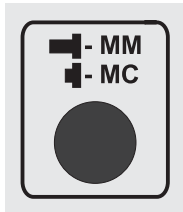


*Important notice.*

## Setting the cartridge mode

The phono amplifier must be used in either MM (moving magnet) or MC (moving coil) mode according to the construction principle of the pickup cartridge to be used. Since most cartridges use the MM (moving magnet) principle the phono amplifier is factory set to operate in this mode. To find out which type your cartridge is please consult the literature accompanying your cartridge. The literature for MC cartridges should also specify the correct impedance and capacity into which the cartridge is designed to work. If in doubt please consult your dealer.

A switch at the back of the phono amplifier sets the correct level of amplification for the cartridge.

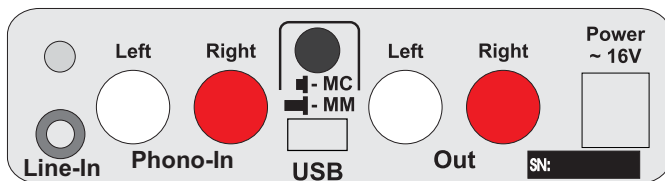


*Before setting MM / MC mode the unit must be disconnected from the power supply and amplifier.*

## Connecting the record player or a line level source

Connect the tonearm signal lead to the sockets **Phono-In** of the phono amplifier. The earthing wire of the tonearm signal lead may be connected to the screw terminal if you encounter hum problems when using the record player. The signal lead of a line level source has to be connected to the socket **Line-In**.

Take care to connect the left and right channels correctly. The right channel is usually marked red, the left channel black or white.



## Connection to the amplifier

Connect the **Out** of the phono amplifier to a line input (such as **AUX, CD, Tuner, Tape** or **Video**) on your amplifier.

Take care to connect the left and right channels correctly. The right channel is usually marked red, the left channel black or white.



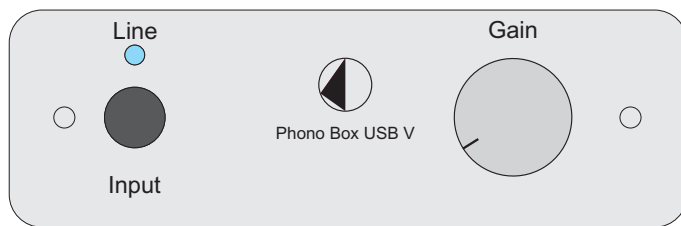
*Make all connections whilst the phono amplifier is disconnected from the power supply.*

*Do not connect the phono amplifiers output to a phono input (sometimes labelled **gram, disc** or **RIAA**) on the amplifier.*

## Mains power connection

The phono amplifier is supplied with a power supply suitable for your country's mains supply. Check the label before connecting to ensure compliance with the mains rating in your house. Connect the low voltage plug from the power supply to the **Power ~ 16V** socket of the phono amplifier before connecting the power supply to the mains.

## Front panel controls



### Input selector

Press the button **Input** to switch between the inputs **Phono-In** (record player) and **Line-In** (line level source). The blue LED on the front panel shows that the input **Line-In** is selected.

### Setting the record level

In case of distorted play back of the recorded music, the level of the analogue signal going to the A/D converter, can be reduced with the level control (**Gain**) on the front panel.

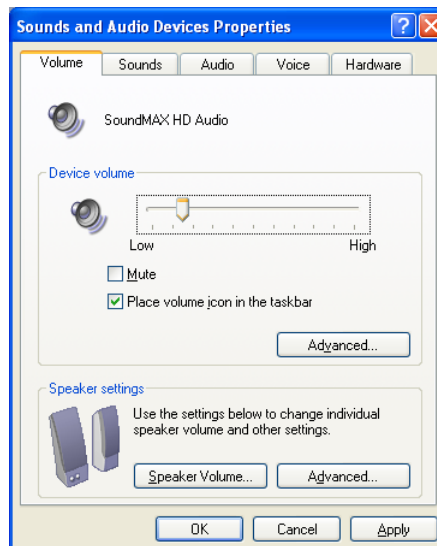
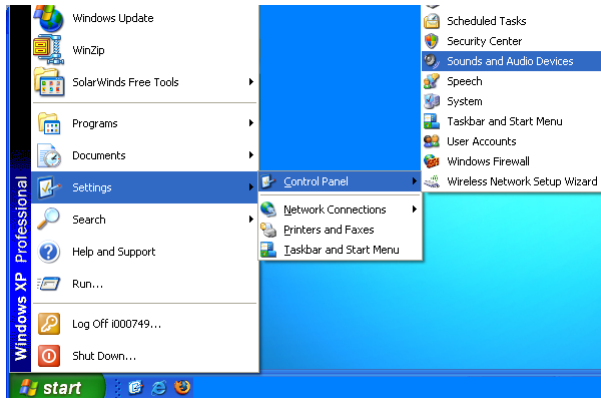
## Connecting to a Computer (e. g. with Microsoft™ Windows™ XP)

1. Connect the USB-output of the Phono Box USB V to a free USB-socket on your computer and turn it on/make sure it is powered on.

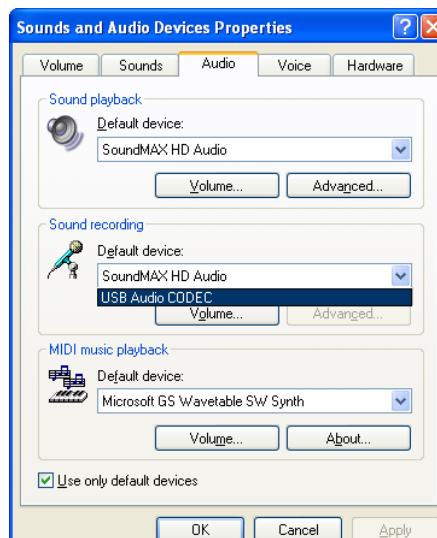
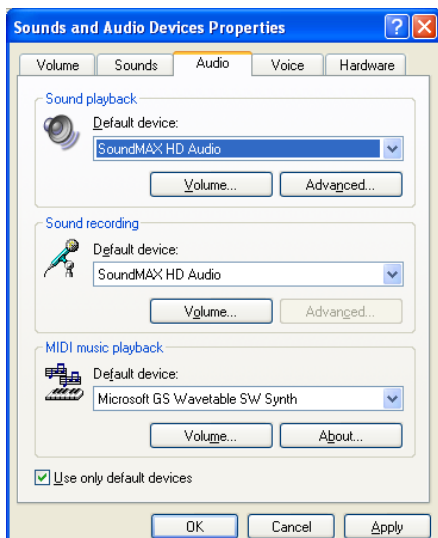


Please note: Connection should be made to an USB-socket of your computer directly. Connecting to USB-hubs or switches can cause problems.

2. The “new hardware found assistant” will automatically detect the unit and announces it as a “USB audio codec”.
3. open the System menu via “Start” (Windows key)  
→ Settings  
→ Control Panel  
→ Sound and Audio Devices
4. In the control panel open the “Sound and audio” menu.



5. In the Sounds and Audio panel select the Audio tab. In the Replay section select your sound card from the pull-down lists (usually preselected).
6. Select the USB Audio CODEC from the pull down list in the Recording section. Make sure your sound card is selected for Replay.



7. Confirm your selections by clicking the OK button.
8. Close the control panel windows and start your recording programme.

In case you do not have a recording programme installed on your computer, you may download one free from the Internet. Recording programmes may be found by searching Google or Altavista.



Please be aware that downloads from the Internet are made entirely at your own risk. Under no circumstances can we carry responsibility or provide support for software products sourced from the internet or for any damage or problems arising from the use thereof. All downloads should be checked with an up-to-date anti-virus programme. License fees may be applicable.

## Connecting to a Computer (e. g. with Microsoft™ Windows 7™)

1. Connect the USB-output of the Phono Box USB V to a free USB-socket on your computer and turn it on/make sure it is powered on.



*Please note: Connection should be made to an USB-socket of your computer directly. Connecting to USB-hubs or switches can cause problems.*

2. Open the "Recording" panel. → **Start** → **Control Panel** → **Hardware and Sound** → **Sound** → **Recording**  
In the "Recording" panel "**USB Audio Device**" (announced as "Microphone") should be selected (usually preselected).



3. Click the OK button and close the control panel windows.
4. Close the control panel windows and start your recording programme.

In case you do not have a recording programme installed on your computer, you may download one free from the Internet. Recording programmes may be found by searching Google or Altavista.



*Please be aware that downloads from the Internet are made entirely at your own risk. Under no circumstances can we carry responsibility or provide support for software products sourced from the internet or for any damage or problems arising from the use thereof. All downloads should be checked with an up-to-date anti-virus programme. License fees may be applicable.*

## Connecting to a Computer (Mac OS™)

1. Connect the USB-output of the Phono Box USB V to a free USB-socket on your computer and turn it on/make sure it is powered on.

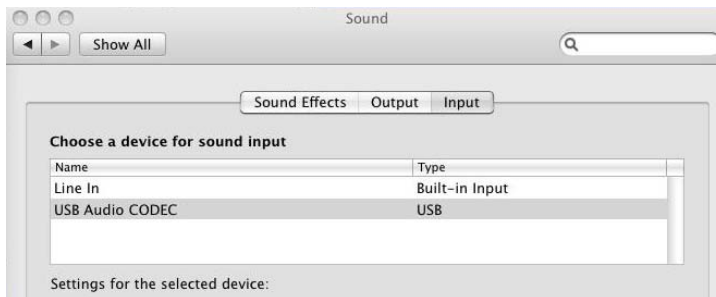


*Please note: Connection should be made to an USB-socket of your computer directly. Connecting to USB-hubs or switches can cause problems.*

2. Open the “System Preferences” panel and select “**Sound**”.



3. In the “Input” panel “**USB Audio CODEC**” should be selected (usually preselected).



4. Close the control panel windows and start your recording programme.

In case you do not have a recording programme installed on your computer, you may download one free from the Internet. Recording programmes may be found by searching Google or Altavista.



*Please be aware that downloads from the Internet are made entirely at your own risk. Under no circumstances can we carry responsibility or provide support for software products sourced from the internet or for any damage or problems arising from the use thereof. All downloads should be checked with an up-to-date anti-virus programme. License fees may be applicable.*

## Technical specifications Pro-Ject Phono Box USB V

Input impedance, MM:	47kohms/120pF
Input impedance, MC:	100ohms/120pF
Gain, MM:	40dB
Output voltage typically:	300mV/1kHz at 3mV (MM input)
Gain, MC:	60dB
Output voltage typically:	300mV/1kHz at 0,3mV (MC input)
Gain, line level input:	11dB
Max. output	9,5Vrms / 1kHz
Noise floor, MM:	86dB (94dB / A weighted)
Noise floor, MC:	68dB (75dB / A weighted)
THD, MM:	<0,01%
THD, MC:	<0,05%
RIAA-equalisation curve accuracy:	20Hz - 20kHz / max. 0,5dB
A/D converter:	Burr Brown PCM2904 16-Bit Delta Sigma
Sampling rates:	32, 44,1 and 48kHz
USB output:	digital serial data protocol USB 1.1
THD:	0,005%
Noise floor:	96dB
Dynamic range:	93dB
Outboard power supply:	16V/200mA AC, suitable for your country's mains supply
Power consumption:	16V/100mA AC
Dimensions W x H x D (D with sockets):	103 x 36 x 103 (115)mm
Weight:	580g without power supply

## Potential incorrect use and fault conditions

No signal on one or both channels:

No connection between player and phono amplifier ore amplifier. This could be due to a faulty plug, broken wire or solder joint or simply loose plug/socket connection.

Strong hum:

No earth connection from cartridge or arm or arm cable to phono amplifier, or earth loop.

Output too quiet or too loud, or distorted:

MM / MC mode incorrectly set - input overloading or insufficiently amplified.

## Service

Should you encounter a problem which you are not able to alleviate or identify despite the above information, please contact your dealer for further advice. Only when the problem cannot be resolved there should the unit be sent to the responsible distributor in your country.

## Warranty



*The manufacturer accepts no responsibility for damage caused by not adhering to these instructions for use. Modification or change to any part of the product by unauthorized persons release the manufacturer from any liability over and above the lawful rights of the customer.*

PRO-JECT is a Registered Trademark of H. Lichtenegger.

This guide was produced by: Audio Trade GmbH  
Copyright © 2009. All rights reserved.

The information was correct at the time of going to press. The manufacturer reserves the right to make changes to the technical specification without prior notice as deemed necessary to uphold the ongoing process of technical development.