



HD33

Life-Size 1080p
3D at Home...

Full 3D
1080p

Full HD
1080p

5
YEARS
COLOUR GUARANTEE

5
year
IMAGER GUARANTEE



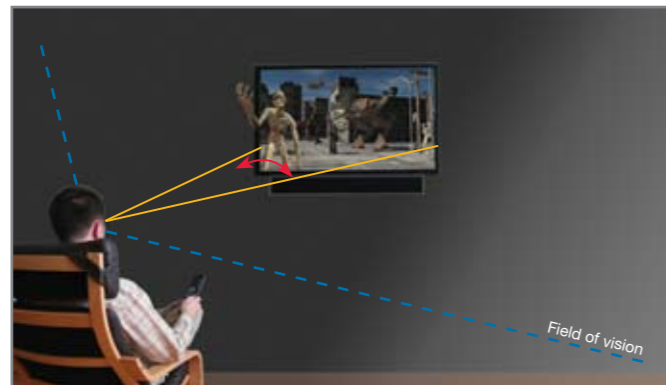
The greatest 3D home cinema experience!

Why use a projector for 3D?

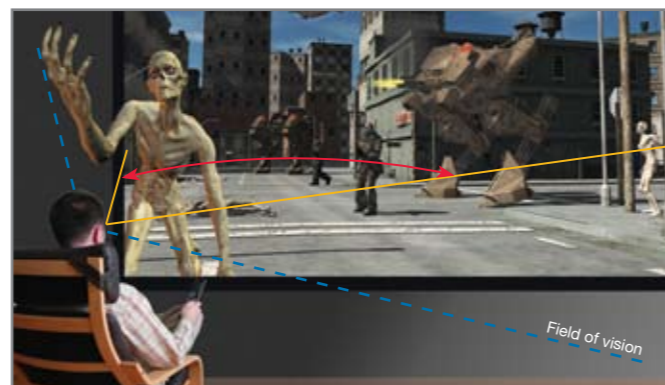
It is a widely accepted fact that the bigger the image, the greater the 3D effect - for the best results it is essential to fill your field of vision, without having to be too close to the screen. Even a huge 50" TV can only create a window on the 3D world, whereas the immersion & excitement created by a massive 150" projection screen makes you feel like you are part of the action!

Due to the inherent drop in image brightness using any active 3D glasses, maximising light output is a top priority for 3D displays. This is why we have developed "PureDepth" - an automated system of advanced image processing and dynamic lamp modes that enhance your viewing; providing a 3D experience akin to existing 2D projectors; without you lifting a finger - Just sit back and enjoy the show!

50" 3D Television



150" Optoma Projector

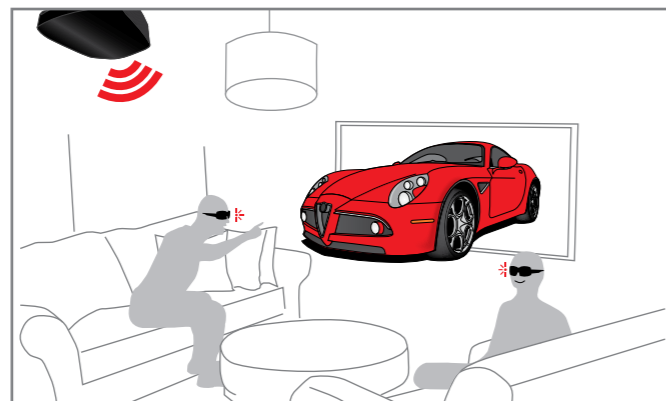


The only thing left is the glasses...

For that seamless 3D experience, we introduce a world-first in home cinema projection - WiFi 3D glasses. Developed in parallel with the HD33, the 3D-RF glasses are optimised to provide higher contrast & brighter images than ever before, while eliminating tedious issues with emitter placement, limited range and potential interference commonly experienced when using Infra-red. Also fully rechargeable, our 3D-RF glasses are controlled using Wi-Fi technology, giving you the peace of mind that comes with knowing both installing and using them will be hassle free.

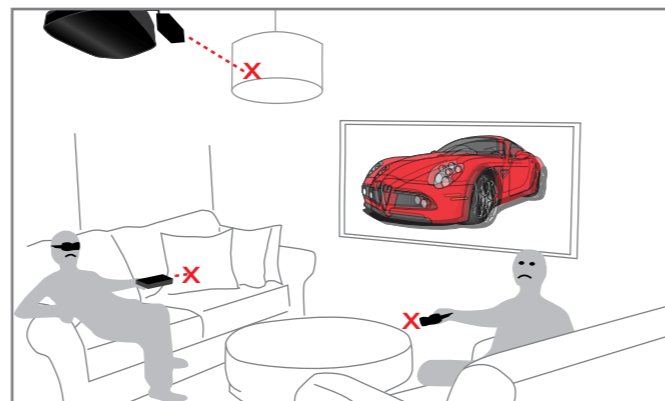


3D-RF System & Glasses



- Crystal Clear 3D Image
- Easy Set-up
- Rechargeable

Infra-Red (IR) Glasses



- Cross-talk issues
- Difficult install
- Interferes with remotes

DLP® Technology and 3D – the perfect partnership.

Unlike competing technologies, DLP® from Texas instrument uses millions of tiny mirrors to maximise the available light output, while the inherent speed & high ANSI contrast work in perfect harmony; eliminating crosstalk, to create the most vivid & compelling 3D experience available anywhere.

DLP®



Other



3D Gaming:

Set your sights on the HD33 for the greatest 3D gaming experience. Line-up the perfect shot while sniper-rounds whizz past you; watch burning ships zoom off into the distance; dodge axe-wielding zombies lurching out of the screen - the possibilities are endless. Combine this with active-motion gaming for the closest thing to your very own virtual reality suite.



3D Movies:

Now that all the latest 3D movies have arrived on Blu-ray 3D™ you can enjoy the same jaw-dropping 3D cinema experience at home, now in fantastic 1080p Full High definition.



3D Sports:

Couldn't get tickets for the big match? - The HD33 brings the big picture home like never before. With more matches broadcast in 3D every season, you'll never miss the great moments in sporting history and you can re-live them time after time as though you were actually there.





Have you ever wanted things just to go smoothly?

Home cinema has always been about recreating the big-screen experience in your own living room – and the HD33 is no exception. With 1800 ANSI Lumens, the HD33 is one of the brightest 1080p projectors around, making it not only the perfect choice for recreating that cinema feeling at home, but also ideal for inviting your mates round to watch the big match. Whether you just fancy a relaxed Movie night or immersing yourself in adrenaline-pumping 3D games, the HD33 is the perfect choice.

24p

Most movies are shot at 24 frames per second. With the advent of true 24p content in stunning 1080p High Definition, you can now enjoy films exactly as the director intended.

But what about your existing film library? – Using advanced frame conversion techniques, the HD33 can re-capture the original 24p frames from all your favourite DVD titles, completely removing unnecessary “pull-down judder” to give them a completely new lease of life.

PureMotion

Using next-generation hardware from our award-winning Themescene projector range, the HD33 is the first Optoma Home Entertainment projector to include our advanced frame-interpolation processing - PureMotion4.

In its lowest setting, PureMotion4 retains the “dream-like” quality of film while maximising the detail in every frame – whereas the highest setting virtually eliminates motion Blur; perfect for action-packed sports, where absolute fluidity is essential. Whether you are watching in 2D or 3D, Puremotion4 gives you silky smooth performance.

PureColour

PureColor provides vivid, perfectly balanced colour with impeccable colour uniformity for vibrant natural looking images. Deep Color makes it possible for the HD33 to reproduce billions of colours ensuring smooth tonal transitions and subtle graduations between hues.



With

Without

PureDetail

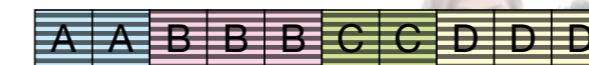
PureDetail uses sophisticated motion adaptive edge enhancement algorithms to ensure that all the information contained in an image is faithfully reproduced on the screen giving a stunning crystal clear, pin sharp picture.



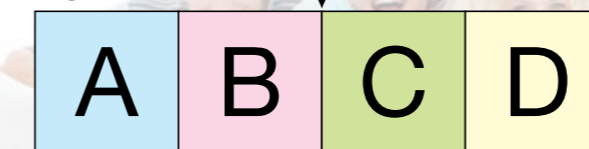
With

Without

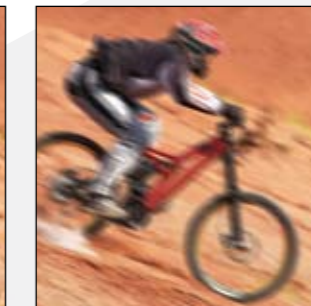
DVD



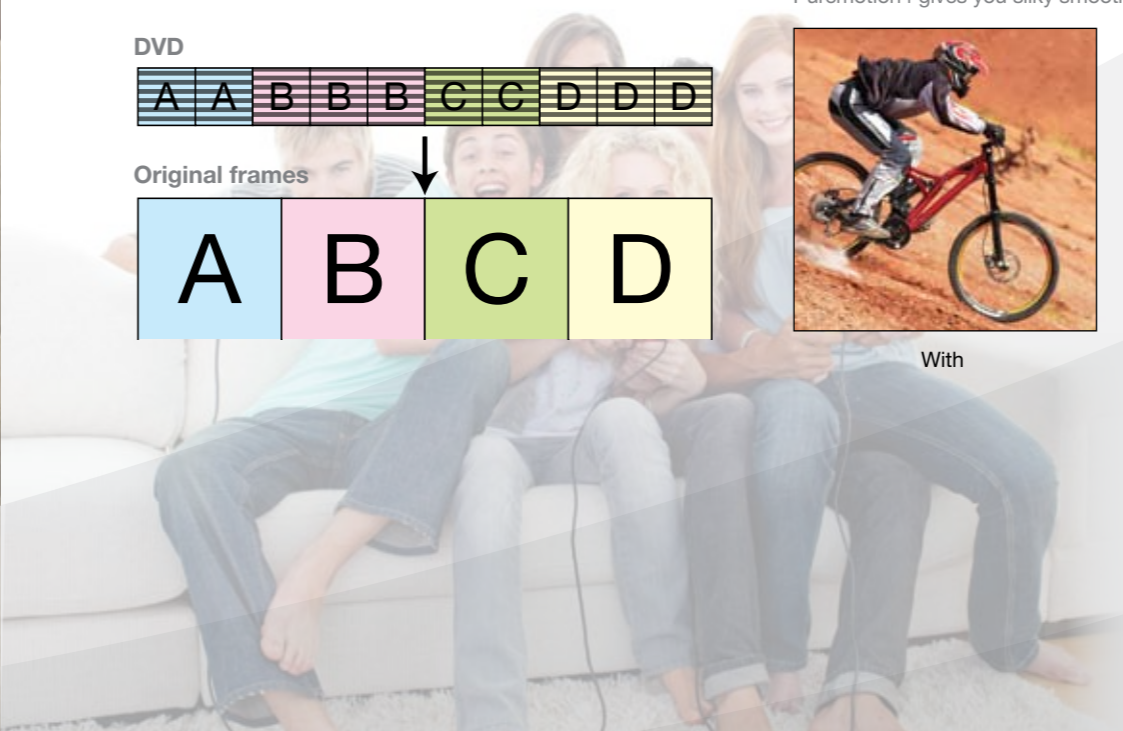
Original frames



With



Without



HD33

HD33 Specifications Highlights	
Full HD	Native 1080p (1920 x1080)
ANSI Contrast	500:1 ANSI
Dynamic Contrast	10,000:1
Brightness ¹	1800 ANSI Lumens
Audible Noise	27dB Standard mode
Throw Ratio	1.5 ~ 1.8
Lamp Life ² (STD)	4000 Hours
Inputs	2 x HDMI 1.4a (3D Supported), Component, VGA (PC\SCART), Composite
Output	3D Sync Out (3-Pin VESA)
Video Compatibility	1080p, 1080i 720p, PAL, NTSC, SECAM
3D Compatibility	Side-by-Side:1080i50 / 60, 720p50 / 60 Frame-pack: 1080p24, 720p50 / 60 Over-Under: 1080p24, 720p50 / 60
Dimensions	380 x 313 x 122mm
Weight	4.5 kg
Optional Accessories	Requires the Optoma 3D-RF System - available seperately. (Additional 3D-RF Glasses are also available) (DLP-Link shutterglasses are also supported)
Warranty	Warranty may vary by country. Please see or ask your local supplier for details
EAN Number	5060059045747

For full specifications please visit the website at: www.optoma.co.uk

Backlight Remote Control



Connections

- 1 3D Sync Out (VESA)
- 2 +12V Trigger
- 3 2 x HDMI (1.4a 3D)
- 4 VGA (PC/YPbPT)
- 5 Component Video
- 6 Composite Video
- 7 RS232
- 8 Kensington™ Lock
- 9 Power

Distance Table

Projection Distance* (m)	Horizontal Image Size (m)	Vertical Image Size (m)	Diagonal Image Size (m)	Diagonal Image Size (inch)	Image Offset (m)
1.20	0.80	0.45	0.92	36.14	0.07
2.00	1.33	0.75	1.53	60.23	0.12
2.50	1.67	0.94	1.91	75.29	0.15
3.00	2.00	1.13	2.29	90.34	0.18
4.00	2.67	1.50	3.06	120.46	0.24
5.00	3.33	1.88	3.82	150.57	0.30



Optoma Europe Limited 42 Caxton Way, Watford Business Park, Watford, Hertfordshire. WD18 8QZ
Tel: +44 (0) 1923 691800 Fax: +44 (0) 1923 691888
www.optoma.co.uk



¹ "ANSI Contrast" is a recognised contrast measurement technique as described in the standard IEC 61947-1

Copyright © 2011, Optoma Europe Ltd. ¹Brightness and lamp lifetime will vary depending on selected projector mode, environmental conditions and usage. As is common with all lamp based projectors, brightness will decrease over the lamp lifetime. ²Typical lamp life achieved through testing. Will vary according to operational use and environmental conditions. Xbox 360, Xbox, Kinect & Windows are registered trademarks of Microsoft Corporation in the United States and other countries. Sony® & PlayStation® are registered trademarks of Sony Corporation. Sky is a registered trademark of BSKyB™. All other product names and company names used herein are for identification purposes only and may be trademarked or registered trademarks of their respective owners. Errors and omissions excepted, all specifications are subject to change without notice. DLP®, BrilliantColor™ and the DLP logo are registered trademarks of Texas Instruments. Some images may be simulated.